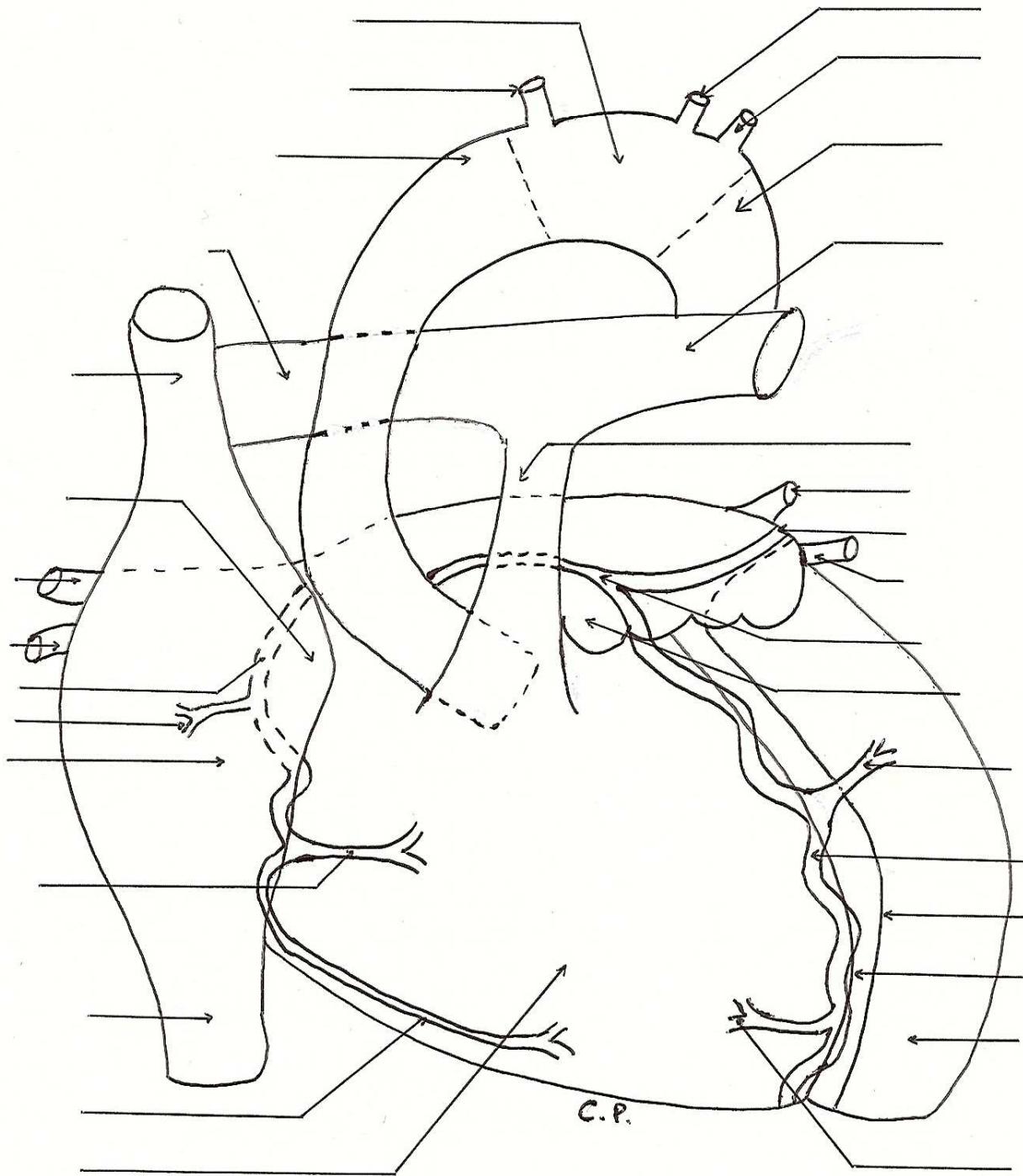
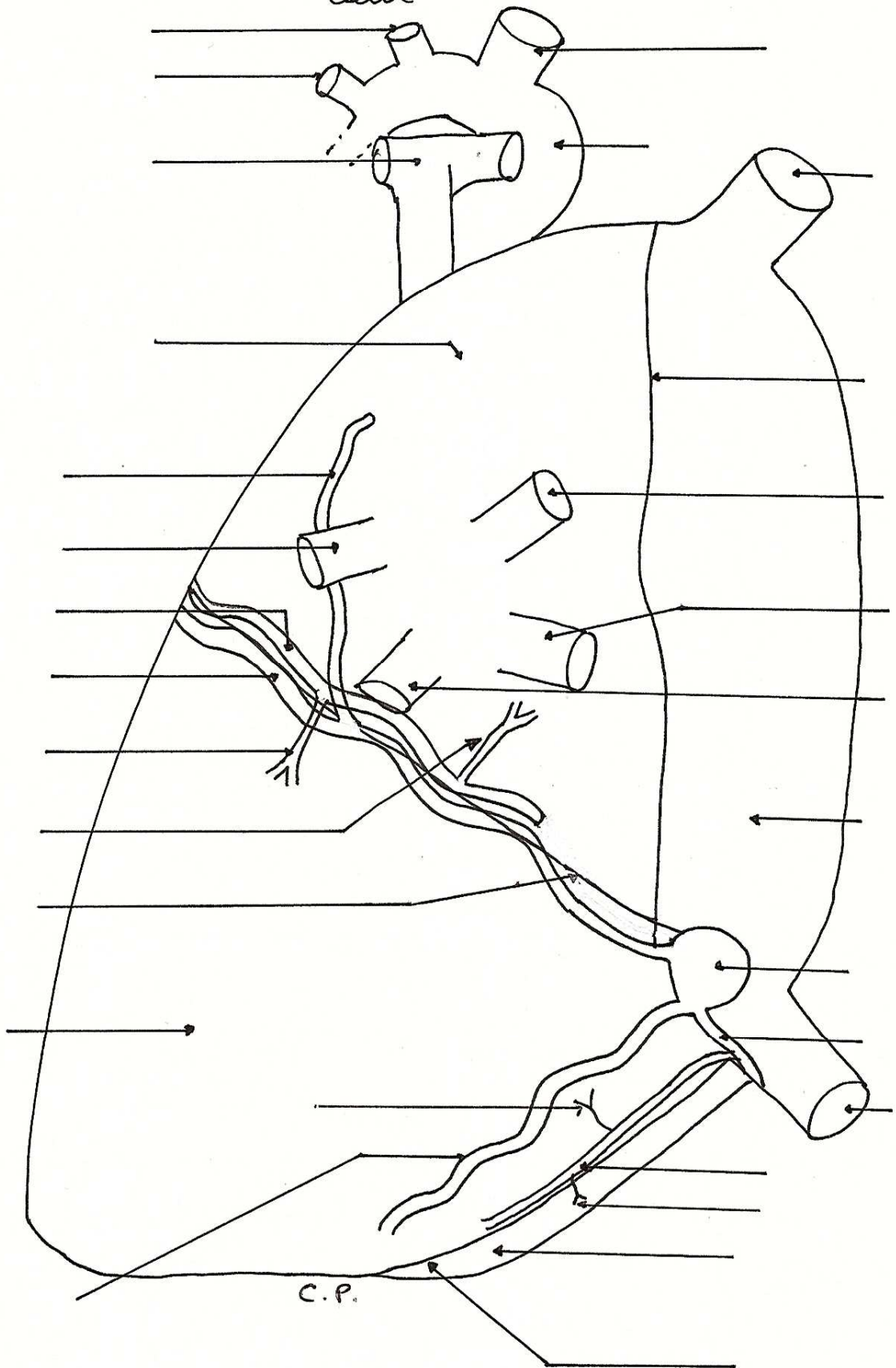


Vue antérieure du coeur



Vascularisation postérieure du cœur

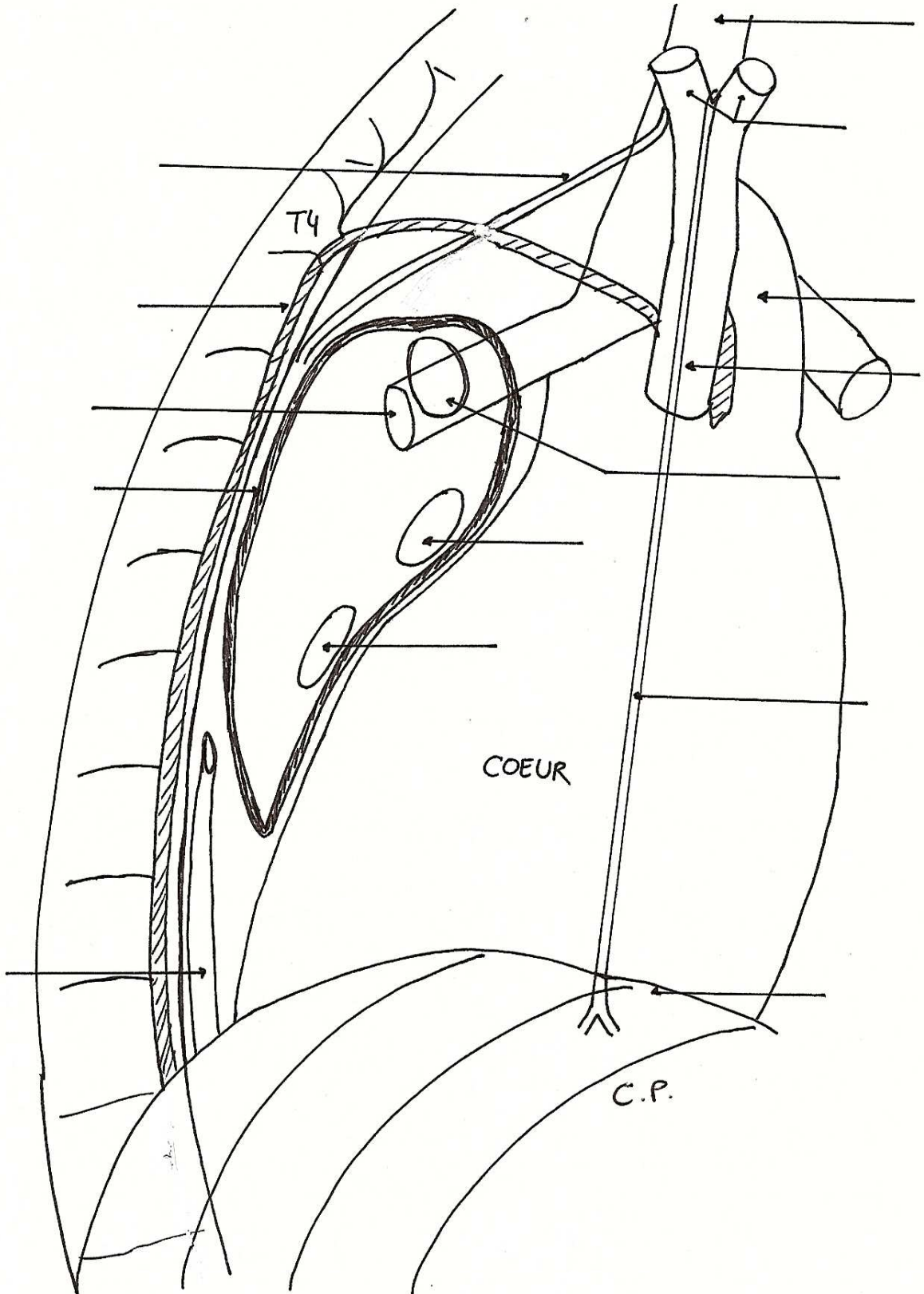
original (33)



Pédicule pulmonaire droit

original (34)

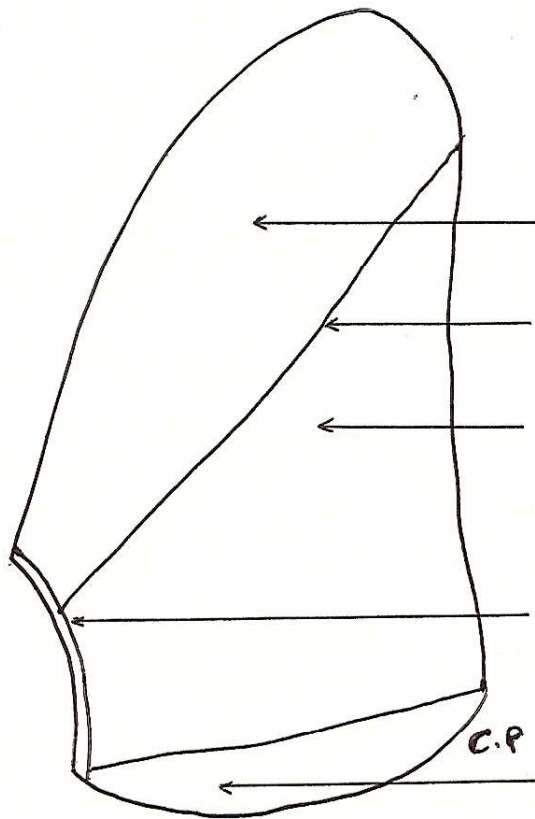
HT
AVT



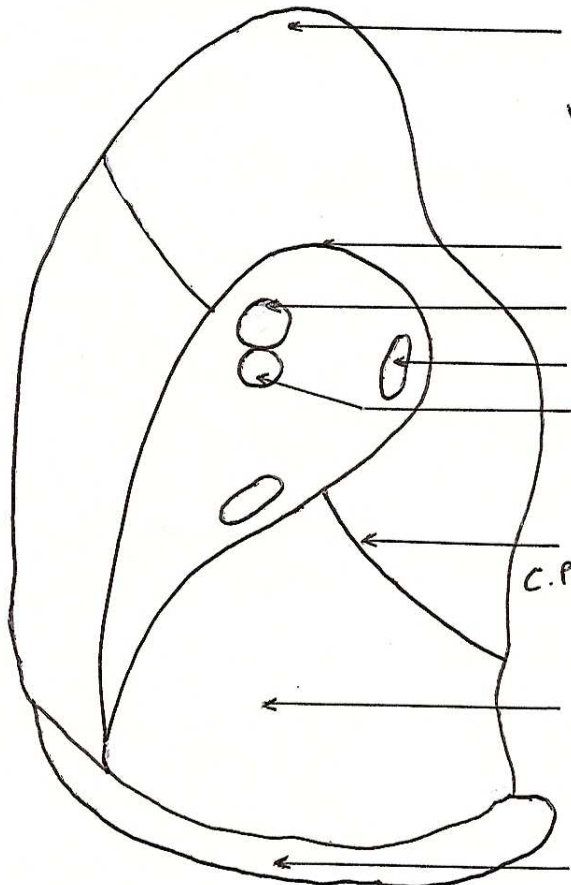
Poumon Gauche

original (35)

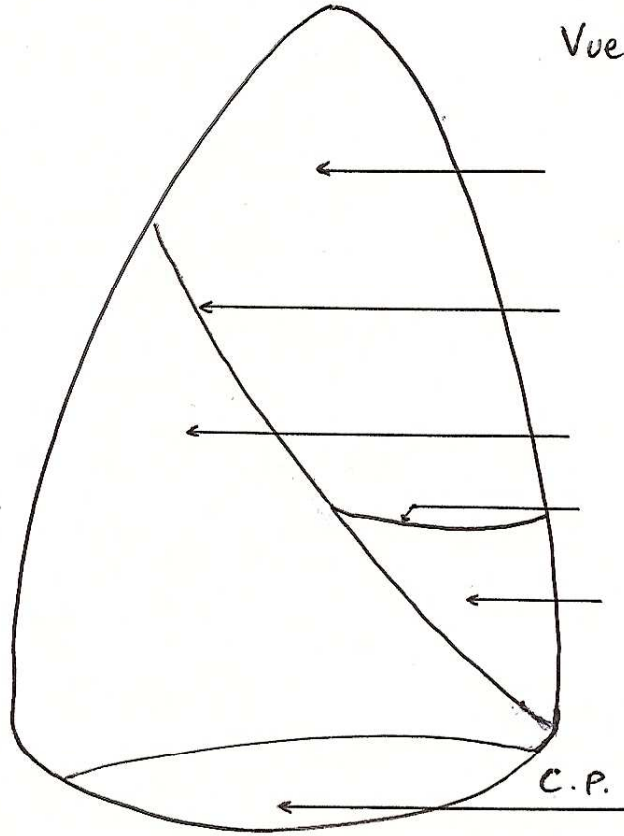
Vue latérale



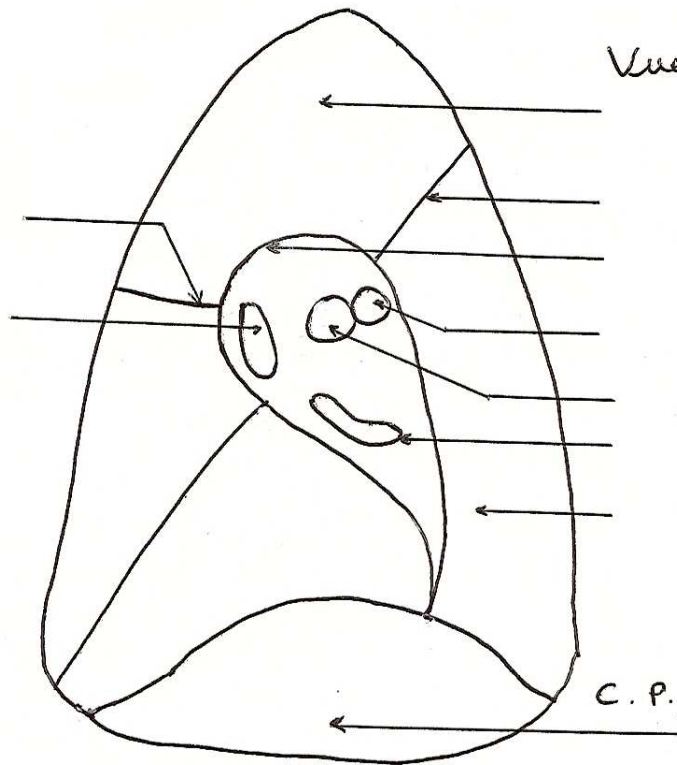
Vue médiale



Vue latérale



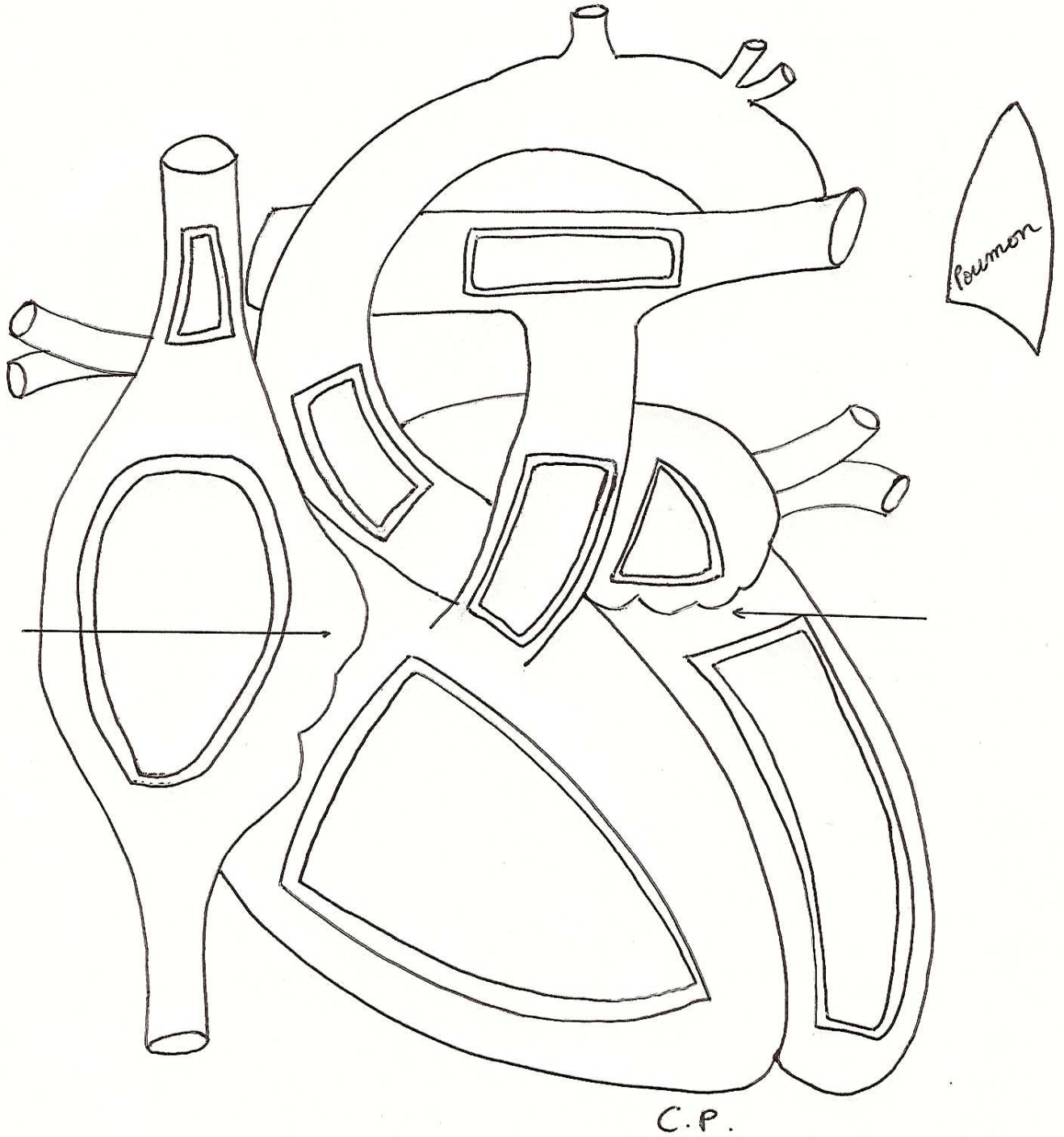
Vue médiale



Cœur fenêtré

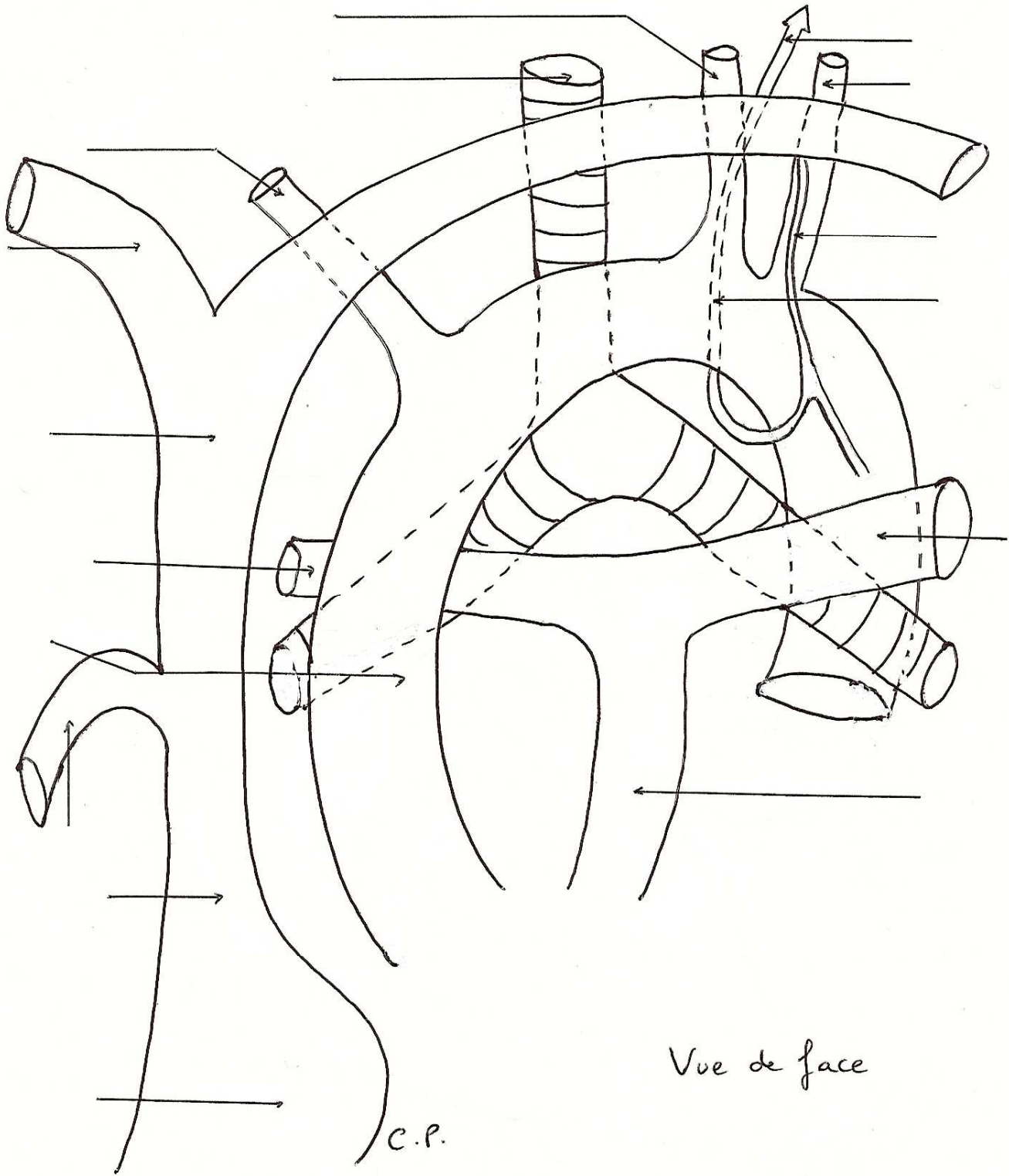
original 37

Vue antérieure

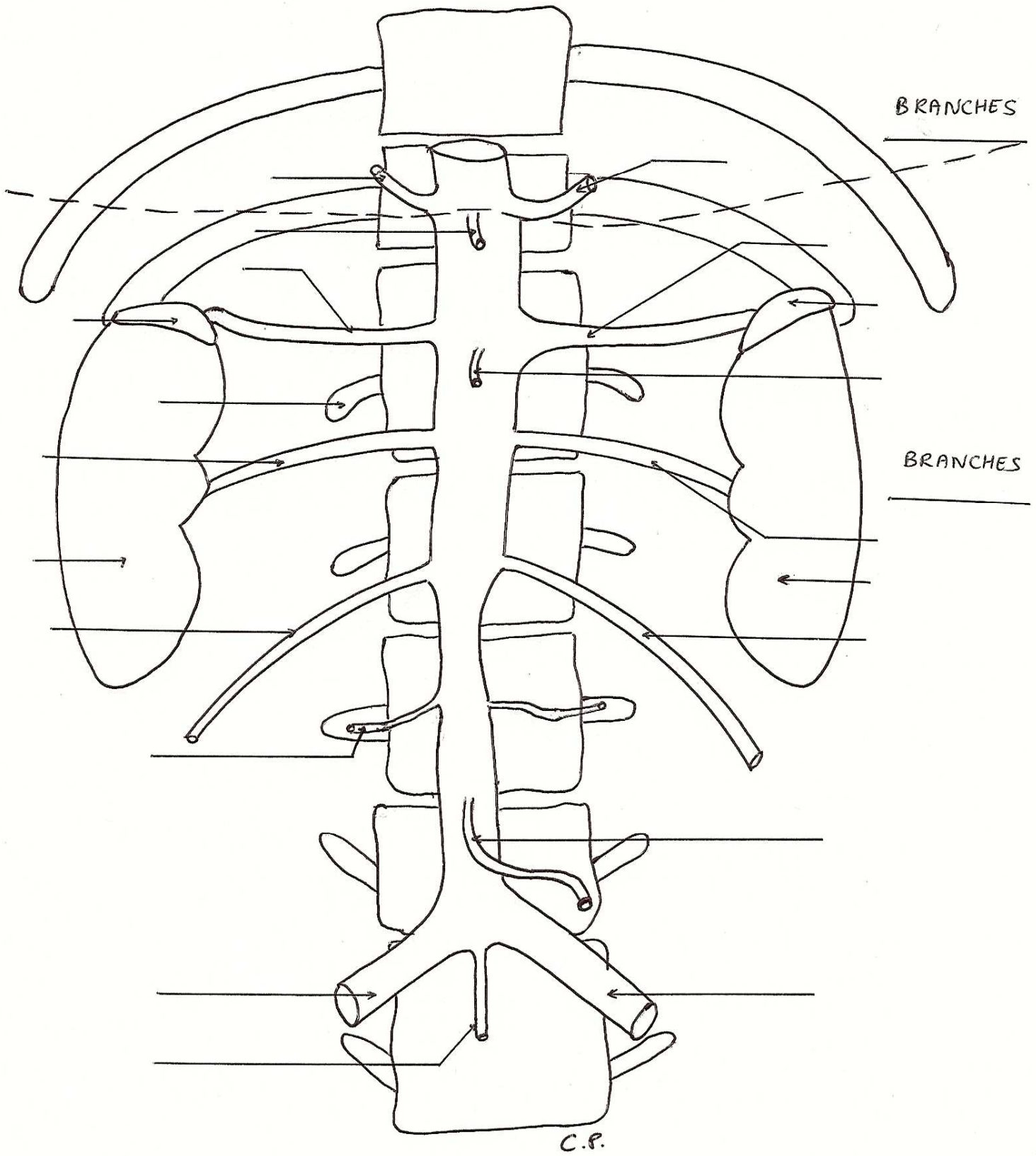


Crosse de l'aorte

original (38)

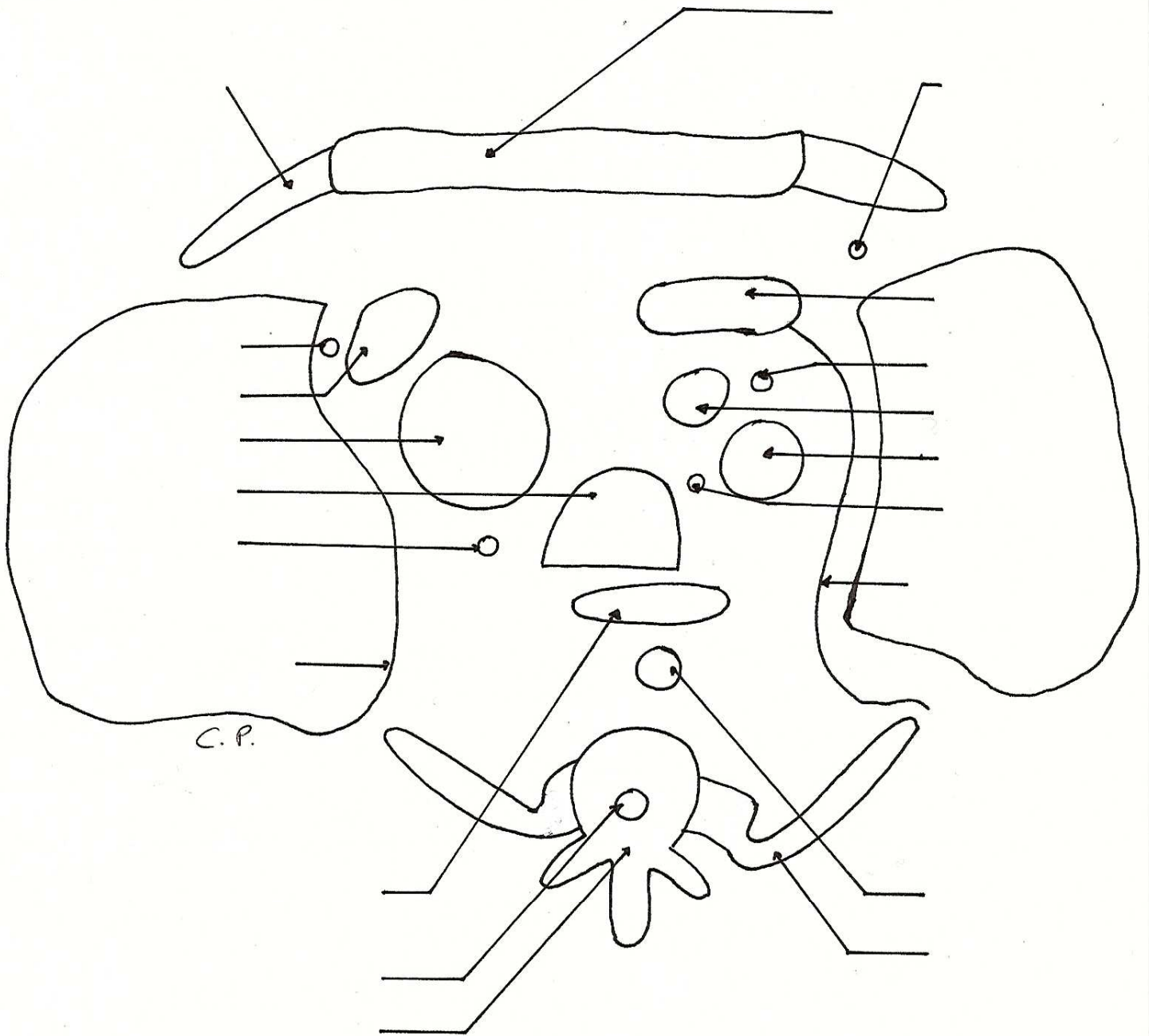


Aorte abdominale



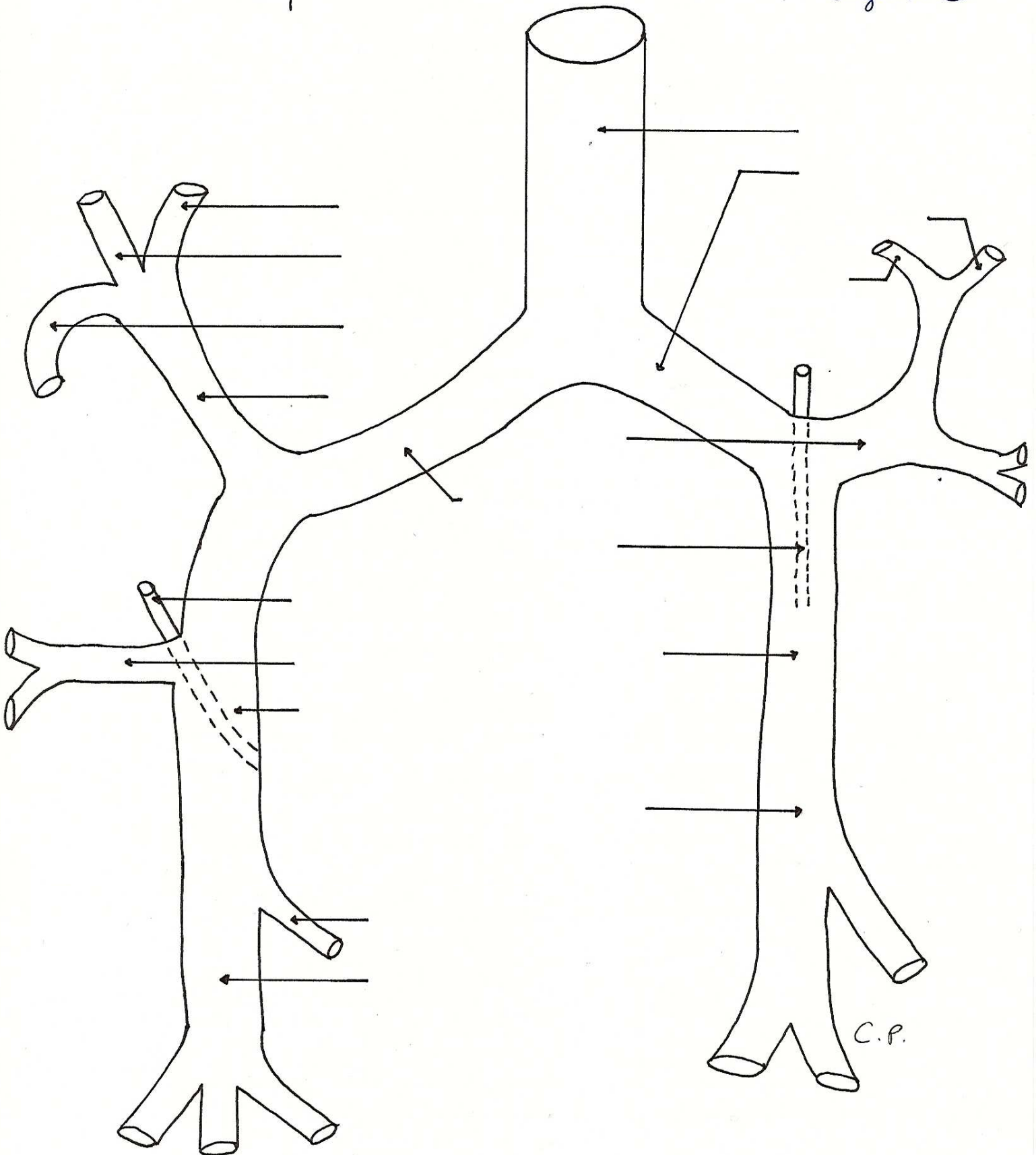
Coupe horizontale du thorax vue inferieure

original 40



tronc pulmonaire

original (41)



Le Pédicule Pulmonaire Gauche

original (42)

